



**WIRELESS 300N  
USB 2.0 ADAPTER**

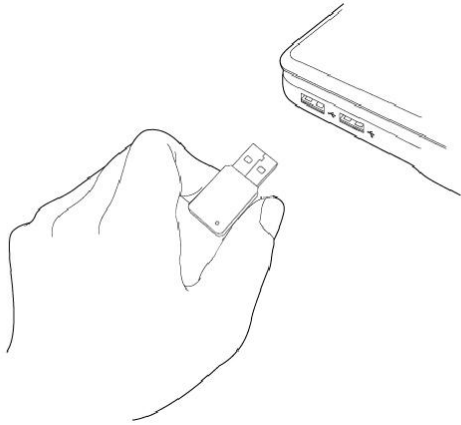
**Quick Installation Guide**

(DN-7053-1)

**Network Card Installation ..... Page 1**  
**Connect to Wireless Access Point.....Page 2**

## Network Card Installation

Please follow the following instructions to install your new USB wireless network card.

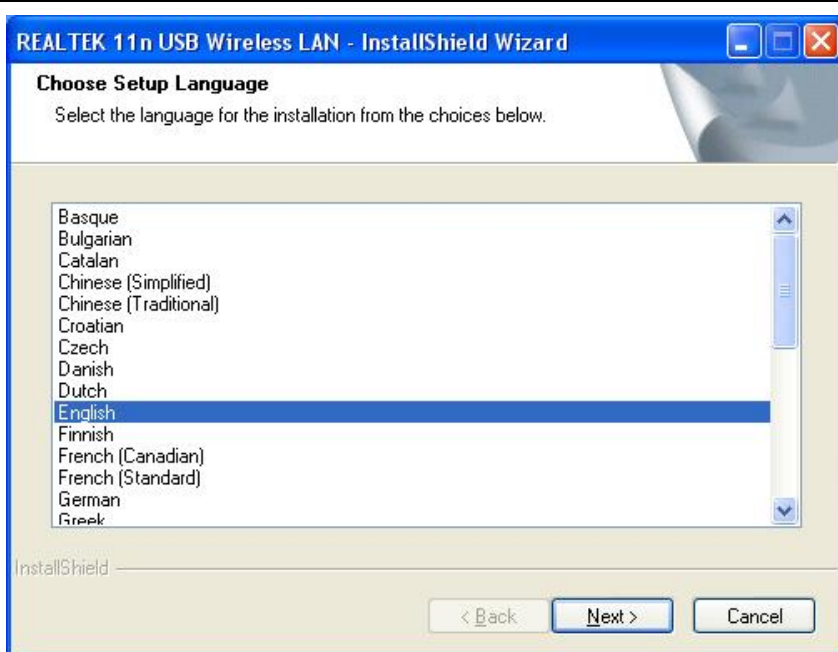


1. Insert the USB wireless network card into an empty USB 2.0 port of your computer when computer is switched on.

Never use force to insert the card, if you feel it's stuck, flip the card over and try again.



2. The following message will appear on your computer, click 'Cancel'.

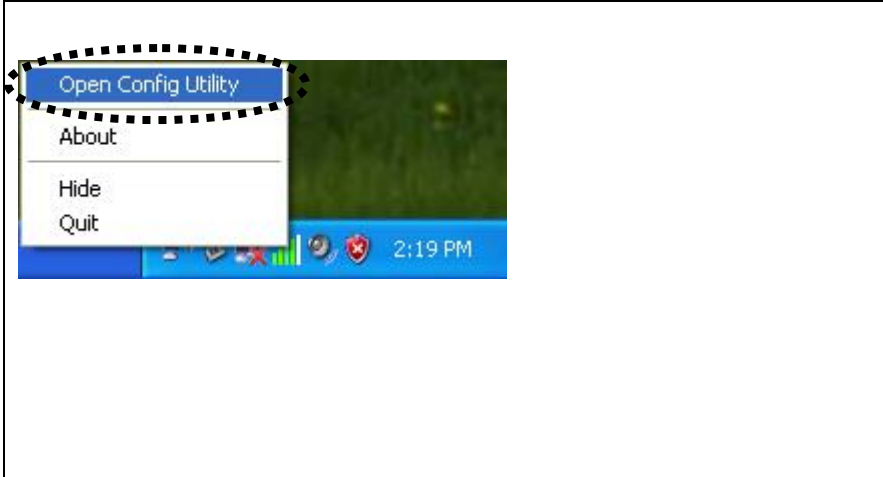


3. Insert device driver CDROM into the CD/DVD ROM drive of your computer, and execute 'Setup.exe' program. Please select your Language and then click 'Next' to continue.

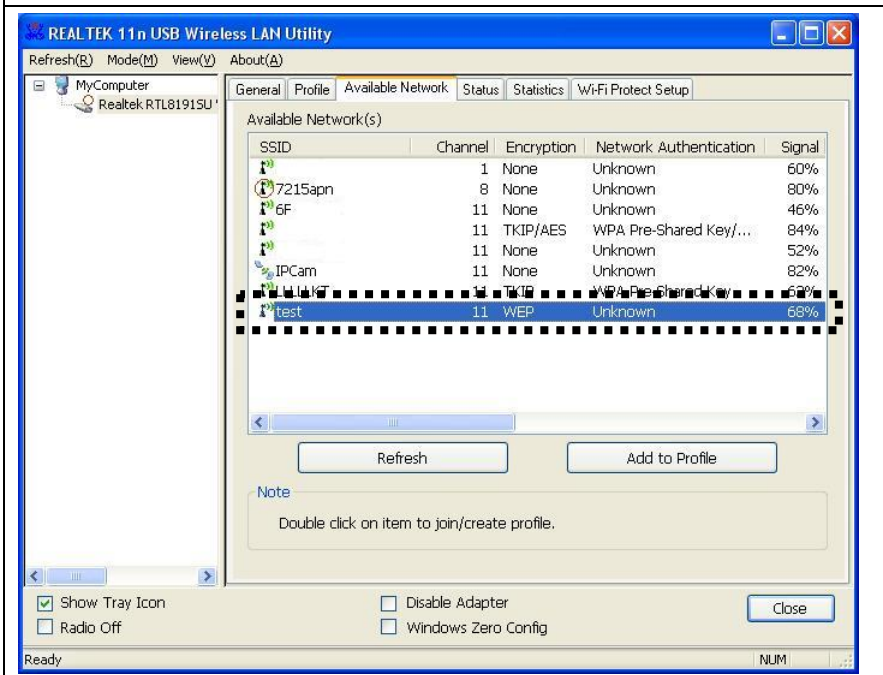
Please follow the instructions of the program.

# Connect to Wireless Access Point

Using Configuration Utility to Connect to Wireless Access Point:

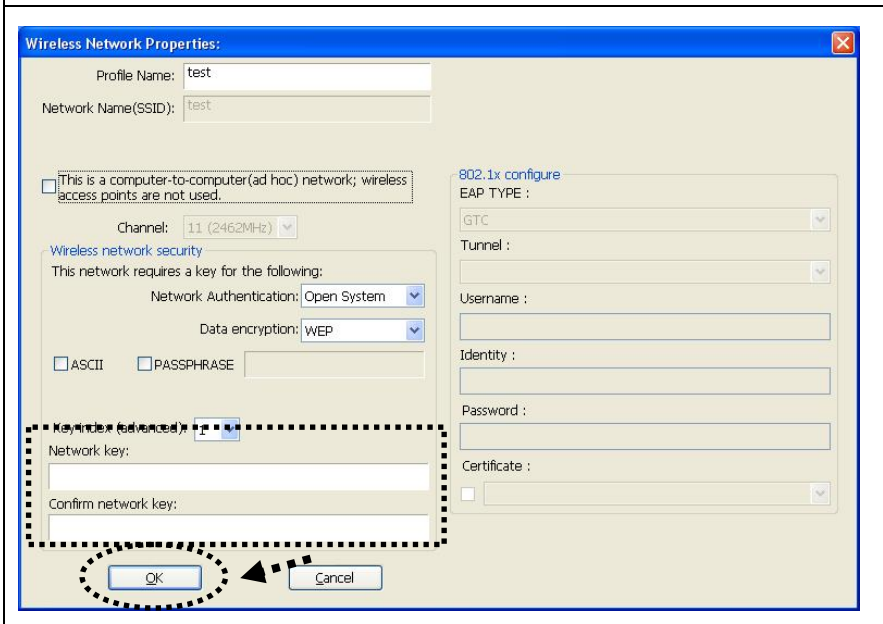


1. After installation is complete, wireless configuration utility will be shown in the desktop of your computer automatically. You will also see an icon at the lower-right corner of your windows system. You can click the icon by right mouse key, and select the configuration utility.

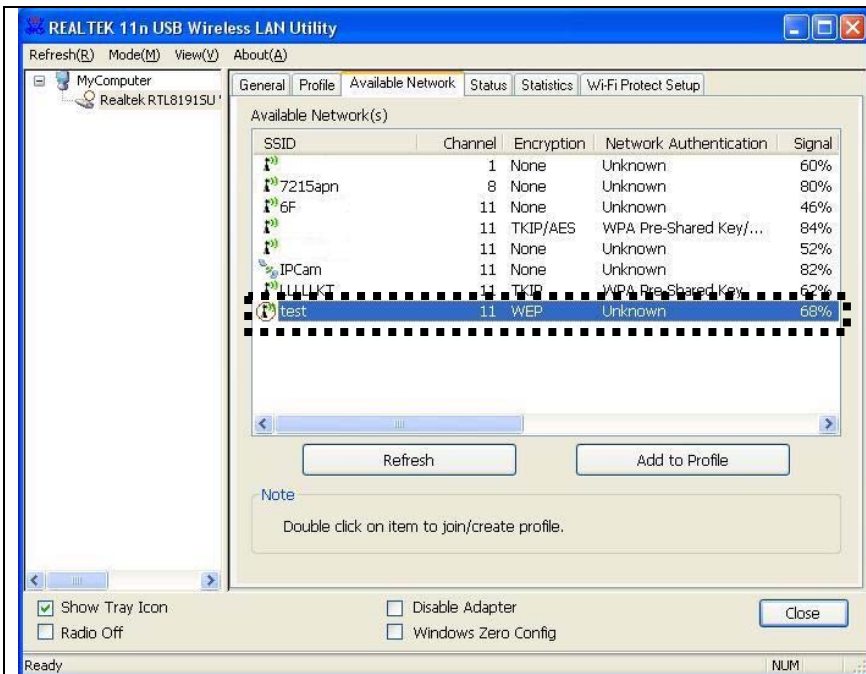



2. Configuration utility will scan for wireless access points and access to any unencrypted wireless access point automatically. If you wish to connect to another access point, select the access point and double click it.

If the wireless access point you want to connect does not show here, please click 'Rescan'.



3. If the wireless access point uses encryption, you have to input WEP key or WPA preshared key. Please ask the owner of the wireless access point you want to connect and input the correct key here, and then click 'OK'. If the value you inputted here is wrong, you will not be able to connect to wireless access point.



4. If the wireless access point is successfully connected, you'll see a  symbol appears in front of the name of wireless device.

For advanced settings and other features of this USB wireless network card, please refer to user manual enclosed in supplied CD-ROM.